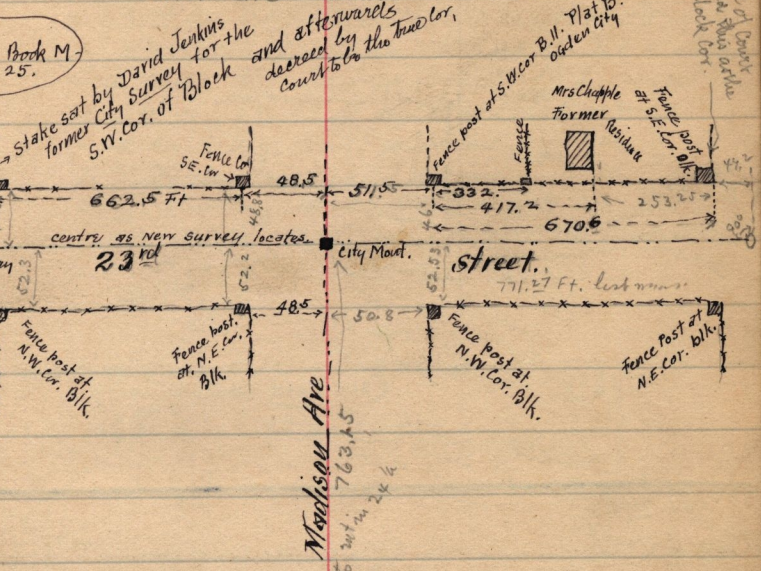


April 20-1898.
Whipple 2nd Ed

City Mont. Cent 23rd & Madison Ave.

N.E. 49.5 Top Hydrant. - S.E. 53.10 blazed Poplar.
S.W. 49.70 blazed locust. - N.W. 46.5 " Bl & old tree.
cent. of sewer-manhole - 5 ft S. 4.5 ft W.

also Book M.
page 25.

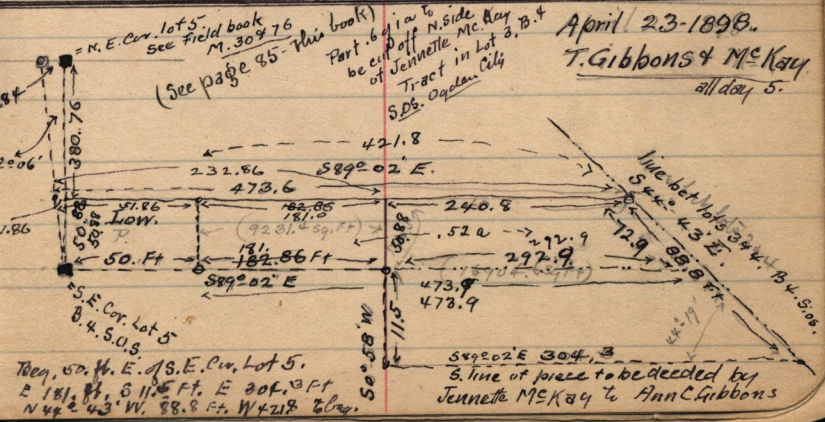


Decline of Center
established from
Block Cor.

Survey to determine the location of following description:

Pt. Lot 1. Blk. 11, Plat B, Ogden City Survey. - Beg. 47 1/4 ft E.
of S.W. Cor. of Lot 1. - 71 5/8 rods - 116 ft - 72 1/2 rods - 63 1/2
rods - 8 rods - W 51 ft. to beg.

April 23-1898.
T. Gibbons & McKay
all day 5.



Beg. 60 ft. E. of S.E. Cor. Lot 5.
E 181 ft. S 11 1/2 ft. E 30 ft. 13 ft
N 42 1/2 ft. W 88.8 ft. W 42 1/2 ft. to Cor.

5. line of piece to be decided by
Jennette McKay to Ann C Gibbons